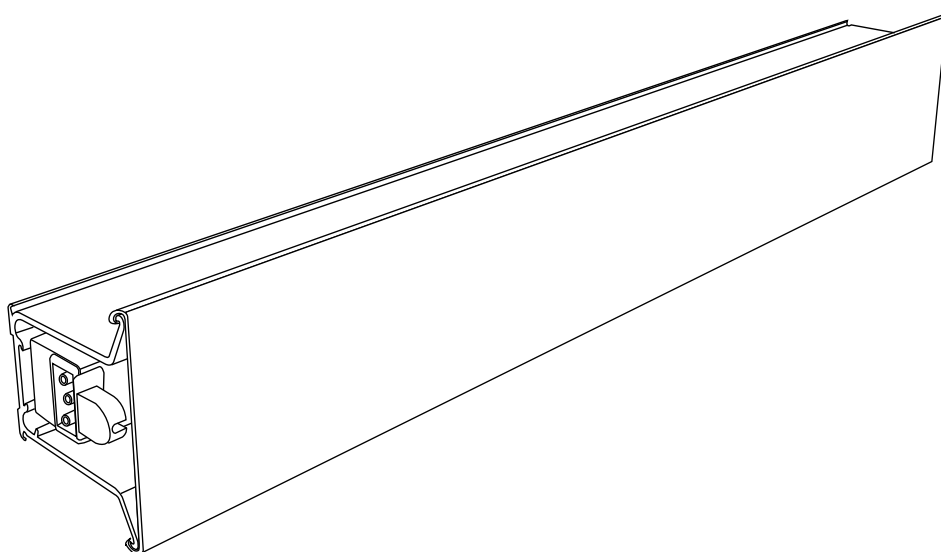


METER BY METER

Systemleuchte
System luminaire
Système luminaire
System armatuur
Sistema di illuminazione

Montageanleitung
Assembly Instructions
Instruction de montage
Montagehandleiding
Istruzioni di montaggio



BELUX AG METER BY METER



Projekt: MUSTER MUSTERRAUM MA

Raum: Musterraum für MA
Wand: Wand Nord

Segment: Einspeisung links, Montage horizontal, Montagehöhe Mittelachse 2340mm

Montageart: A 2/ Segment einseitig freistehend

Aluminium symmetrisch

Wunschlänge: 3'500.00 mm

Anzahl Leuchten: 3

Seitenfolie 1: rot

Leuchtenlänge: 3'204.90 mm

Leistung: 77 Watt
Variante: 240V Standard

Seitenfolie 2: blau

freie Länge: 295.10 mm

Frontfolie: gelb

Komponente:	Art.Nr:	Std. Länge:	Anzahl:	Spez. Länge:	Spez. Anzahl:	
Leuchte 21W N	MBM 21N	52055902	868.0	2		
Leuchte 35W N	MBM 35N	52055904	1468.0	1		
Träger - Profil	MBM 10	52055001	1580.0	1	959.6	2
Fugenabdeckung	MBM 90	52057101		2		
Abdeck - Profil Sym.	MBM 10A	52055101			1166.7	3
Einsp.-Stecker 3pol (Wi)	MBM 310	52056901		1		
Kupplung 3pol (Wi)	MBM 311	52056911		2		
Endstück	MBM 65	52057001		1		
Folienträgerprofil	MBM 81	54051101	1580.0	4	340.0	2
Folie blau	MBM 82	54051201	1580.0	2	340.0	1
Folie rot	MBM 86	54051204	1580.0	2	340.0	1
Farbfolie gelb	MBM 184	54051403	1580.0	2	340.0	1
Halter für Farbfolie	MBM 180	54051301	1580.0	2	340.0	1
Montageplatte	E-2673-01			6		
Montageplatte-Kabelanschluss	E-3224-01			1		
Blechclips	MBMclips	54051701		7		
Verriegelungsschieber	E-3213			1		
Senkschraube M4 x 6 (z.Vormontage)	N-1449			9		
Senk-Holzschraube M4 x 40	N-2638			9		
Nivellierplatte	E-2665			9		
Dübel	N-1164			9		

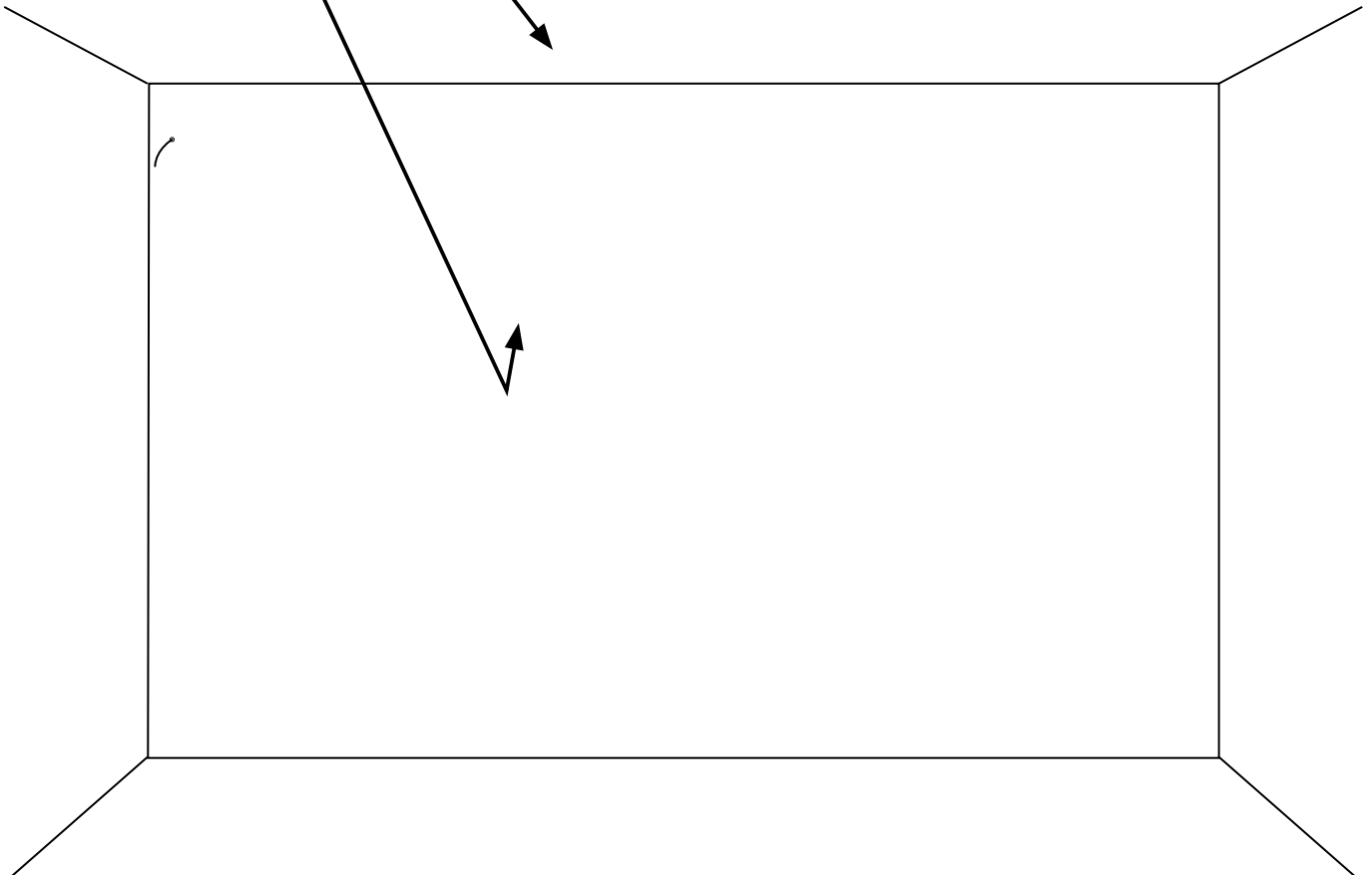
BELUX AG METER BY METER



Projekt: **MUSTER MUSTERRAUM MA**

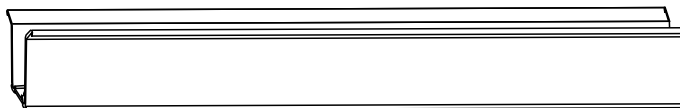
Raum: **Musterraum für MA**

Wand: **Wand Nord**

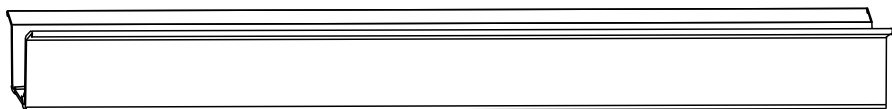


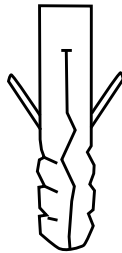
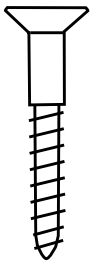
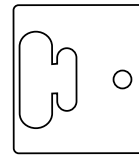
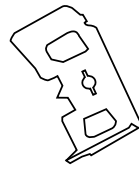
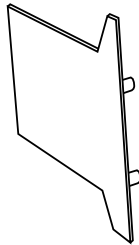
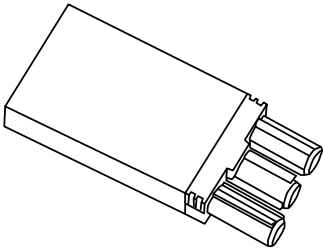
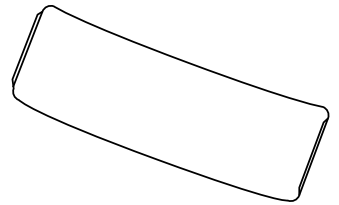
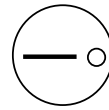
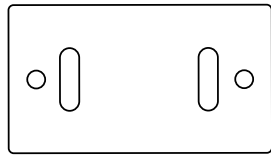
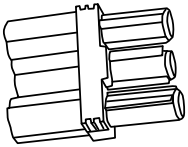
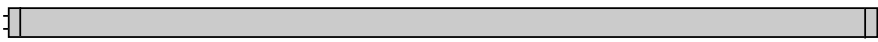
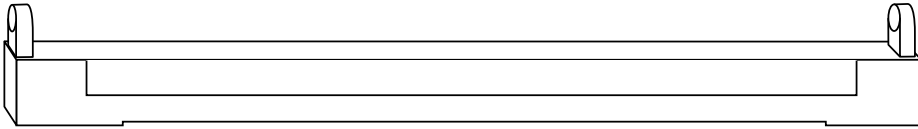
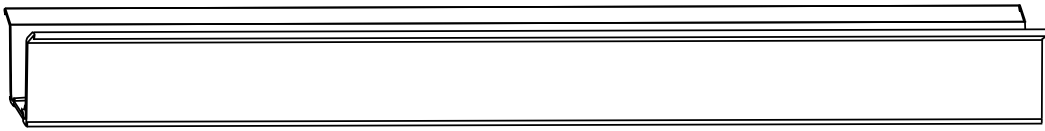
Profile:

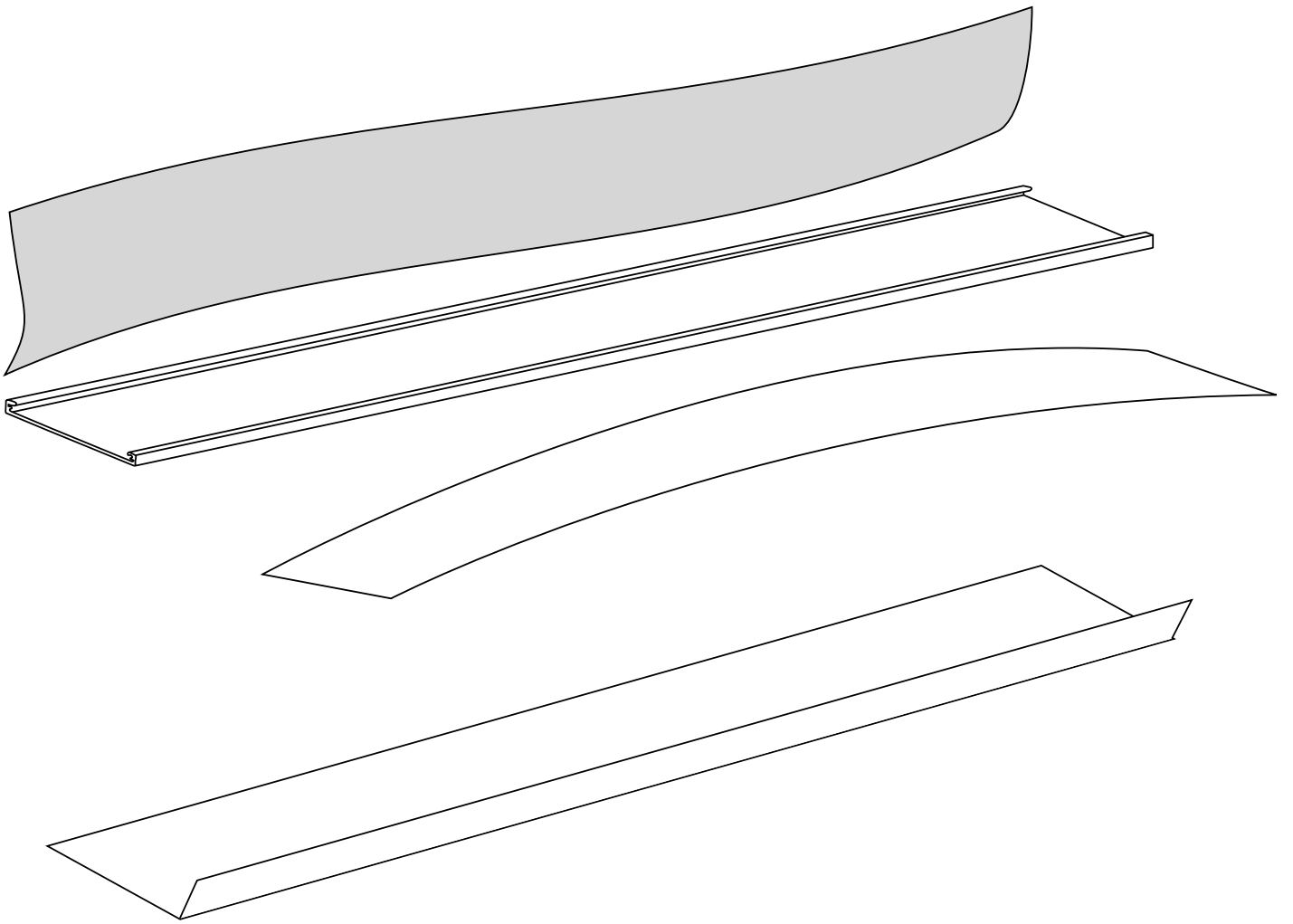
1 x 1580 mm



2 x 959,6 mm







Technische Hinweise

Technical Information

Indications techniques



- BELUX-Produkte ohne Stecker müssen ausschliesslich von einer autorisierten Fachkraft installiert werden.
- Wenn die Leuchte in Betrieb ist, besteht beim Glühmittel Verbrennungsgefahr!
- Beim Leuchtmittelwechsel besteht Verbrennungsgefahr.
- Bei Montage, Reinigung, Wartungsarbeiten und Leuchtmittelwechsel immer Stromzufuhr durch Entfernen der bauseitigen Sicherung unterbrechen!
- Leuchte darf nicht mit Metallteilen in Kontakt stehen, die nicht mit dem Schutzleiter der Installation verbunden sind!

- BELUX products without a power plug must be installed exclusively by an authorized expert.
- When switched on, the lamp may cause burns when touched!
- When changing the bulbs you are in danger of getting burned!
- During installation, cleaning, maintenance work and change of illuminants always interrupt the power supply by removing the respective circuit breaker!
- Lamp must not have contact with metal parts that are not connected with the ground wire of the installation!

- Le luminaire ne peut être installé que par une main-d'oeuvre qualifiée autorisée.
- Lorsque la lampe est allumée, vous pouvez vous brûler avec l'ampoule!
- Le remplacement de sources lumineuses recèle un risque de brûlures!
- Lors du montage, du nettoyage, des travaux de maintenance et du remplacement des sources lumineuses, veuillez toujours couper le courant en retirant le fusible!
- La lampe ne doit pas être en contact avec des pièces métalliques qui ne sont pas connectées au conducteur de protection de l'installation!



- Eingangsspannung 230V/50Hz

- Input voltage 230V/50Hz

- Tension d'entrée 230V/50Hz



- Leuchtmittel T5 14W/21W/28W/35W

- Lamp T5 14W/21W/28W/35W

- Ampoule T5 14W/21W/28W/35W



- Leuchtmittel nur mit handelsüblichen, nicht aggressiven Reinigungsmitteln reinigen.

- Use only commercially available non-aggressive cleaning agents for cleaning the lamps

- Ne nettoyer les lampes qu'avec des nettoyeurs non agressifs en vente dans le commerce



- Leuchte darf nicht im Freien verwendet werden (ICE 417)

- Lamp must not be used in the open (ICE 417)

- Ne pas utiliser la lampe à l'extérieur (ICE 417)



- Schutzklasse I

- Safety class I

- Classe de protection I



- Leuchte **geeignet** zur Montage auf normal entflammare Flächen

- Lamp **suitable** for installation on surfaces with normal flammability rating

- Lampe **appropriée** pour montage sur des sur faces normalement in flammables



- Technische Konformität gemäss EN-Richtlinien

- Technical conformity according to European Standard guidelines

- Conformité technique selon les directives EN

Technische aanwijzingen



- Armatuur mag uitsluitend door een erkend elektrotechnisch installateur geïnstalleerd worden.
- Een brandende lamp is heet. Pas op voor verbrandingsgevaar!
- Bij het wisselen van het lichtmiddel bestaat verbrandingsgevaar!
- Onderbreek altijd de stroomtoevoer door verwijderen van de toestelzijdige stop bij de montage, reiniging, onderhoudswerk en het verwisselen van de gloeilamp!
- Lamp mag niet in contact staan met metalen delen, die niet verbonden zijn met de aardgeleider van de installatie!



- Ingangsspanning 230V/50Hz



- Lamp T5 14W/21W/28W/35W



- Reinig de lampen uitsluitend met normale in de handel verkrijgbare, niet agressieve reinigingsproducten



- De lamp mag niet in openlucht gebruikt worden (ICE 417)



- Beschermingsklasse I



- Lamp **geschikt** voor de montage op normaal ontvlambare oppervlakken



- Technische gelijkvormigheid volgens EN-richtlijnen

Informazioni tecniche

- La lampada può essere installata solo da uno specialista.
- Pericolo di scottature! Non toccare la lampadina quando la lampada è accesa!
- Durante la sostituzione dei corpi luminosi sussiste il pericolo di combustione!
- In caso di interventi di installazione, la pulizia, manutenzione e sostituzione dei corpi luminosi interrompere sempre l'alimentazione elettrica eliminando la protezione prevista!
- La lampada non deve essere a contatto con pezzi di metallo, che non siano collegati con la materia di protezione dell'installazione.

- Tensione di alimentazione 230V/50Hz

- Lampadina T5 14W/21W/28W/35W

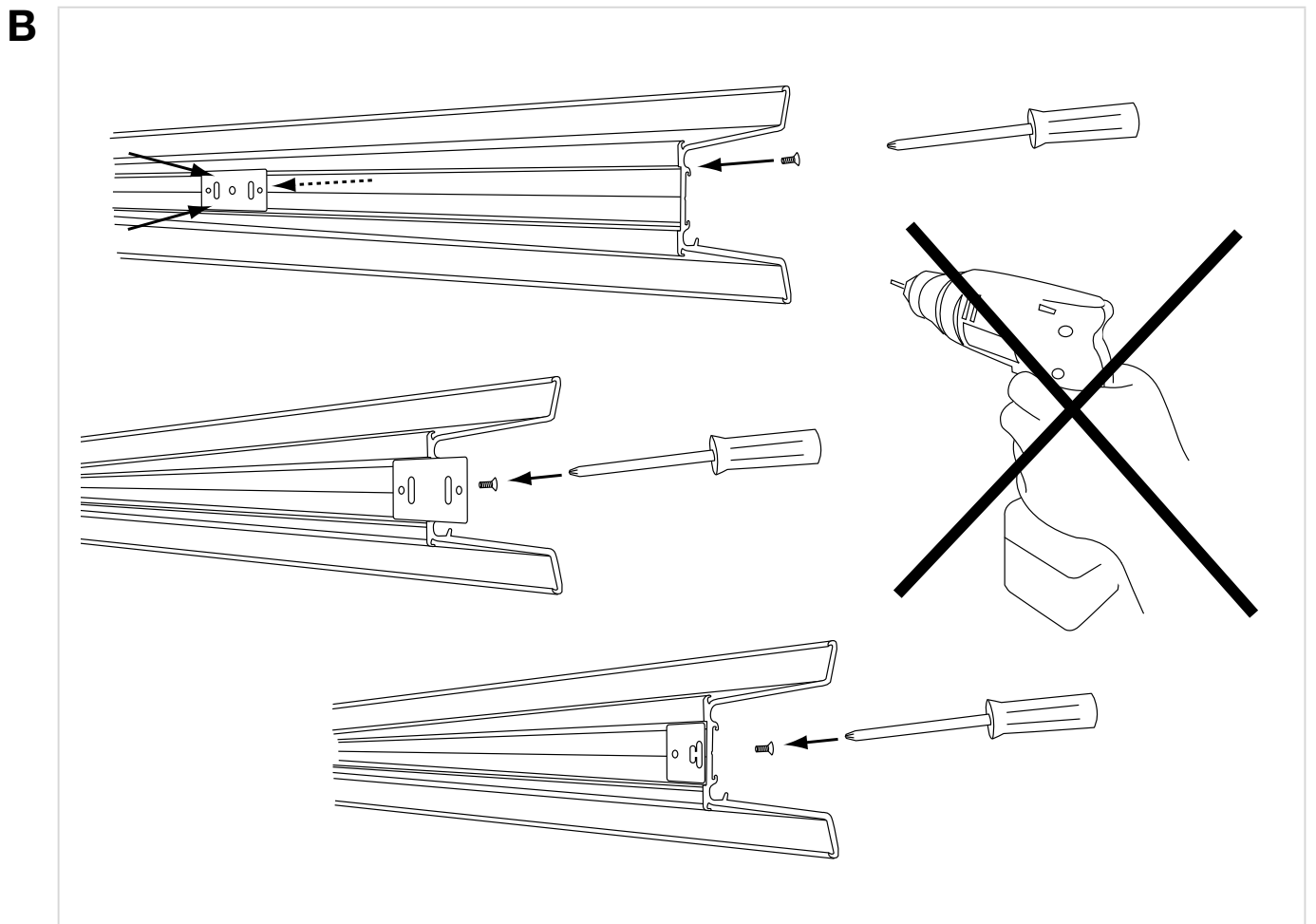
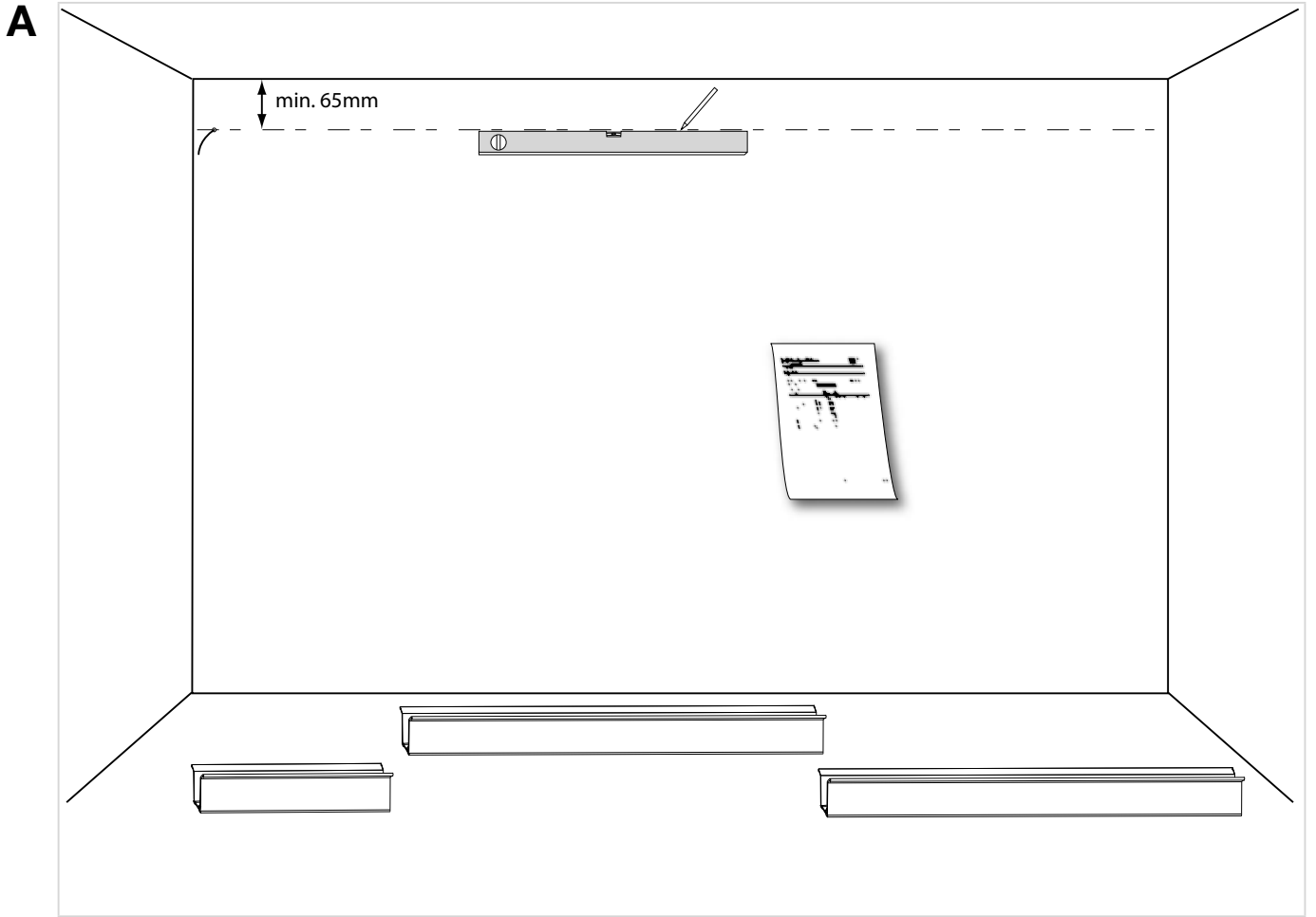
- Pulire la lampada solamente con i normali detersivi non aggressivi che si trovano in commercio

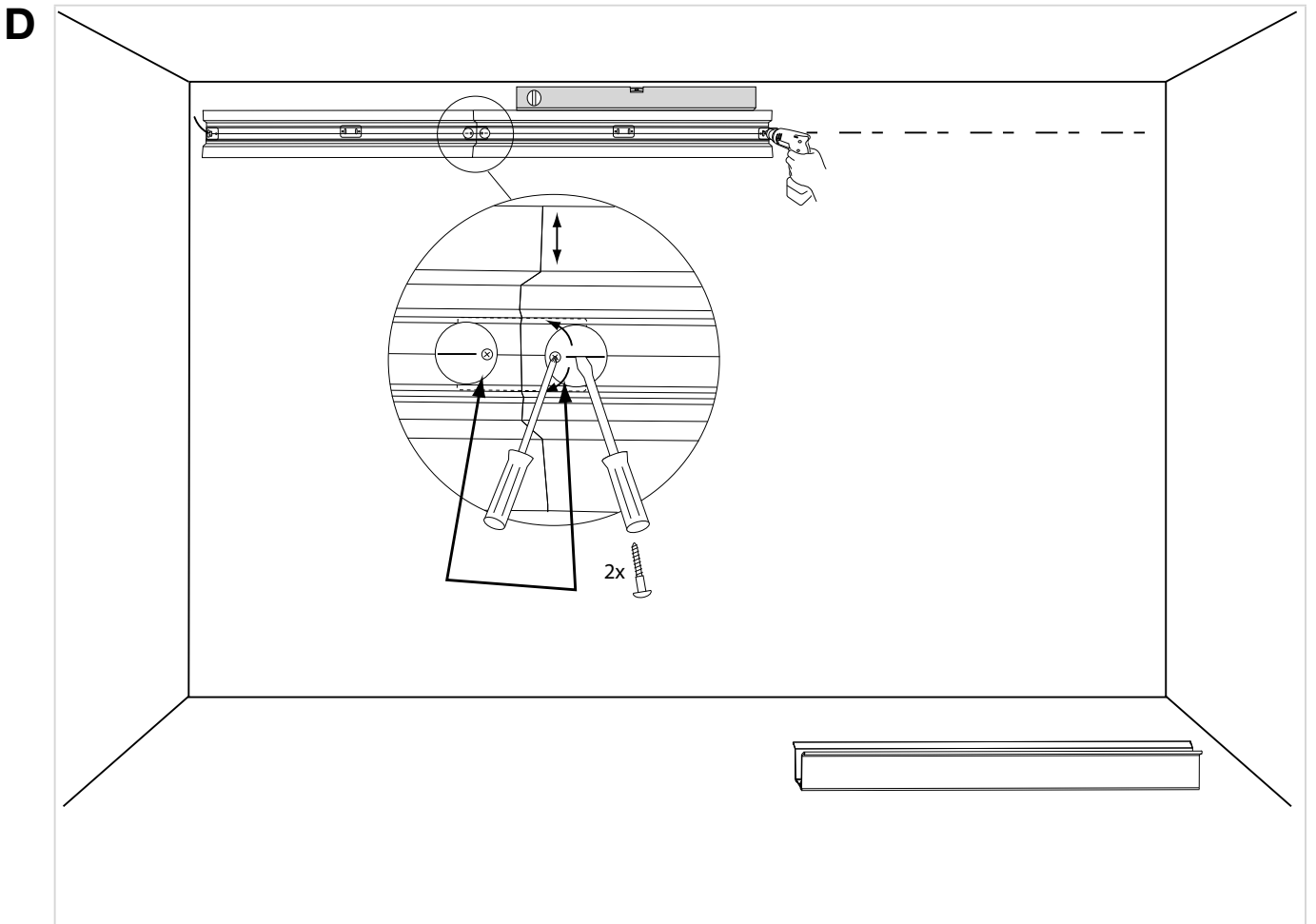
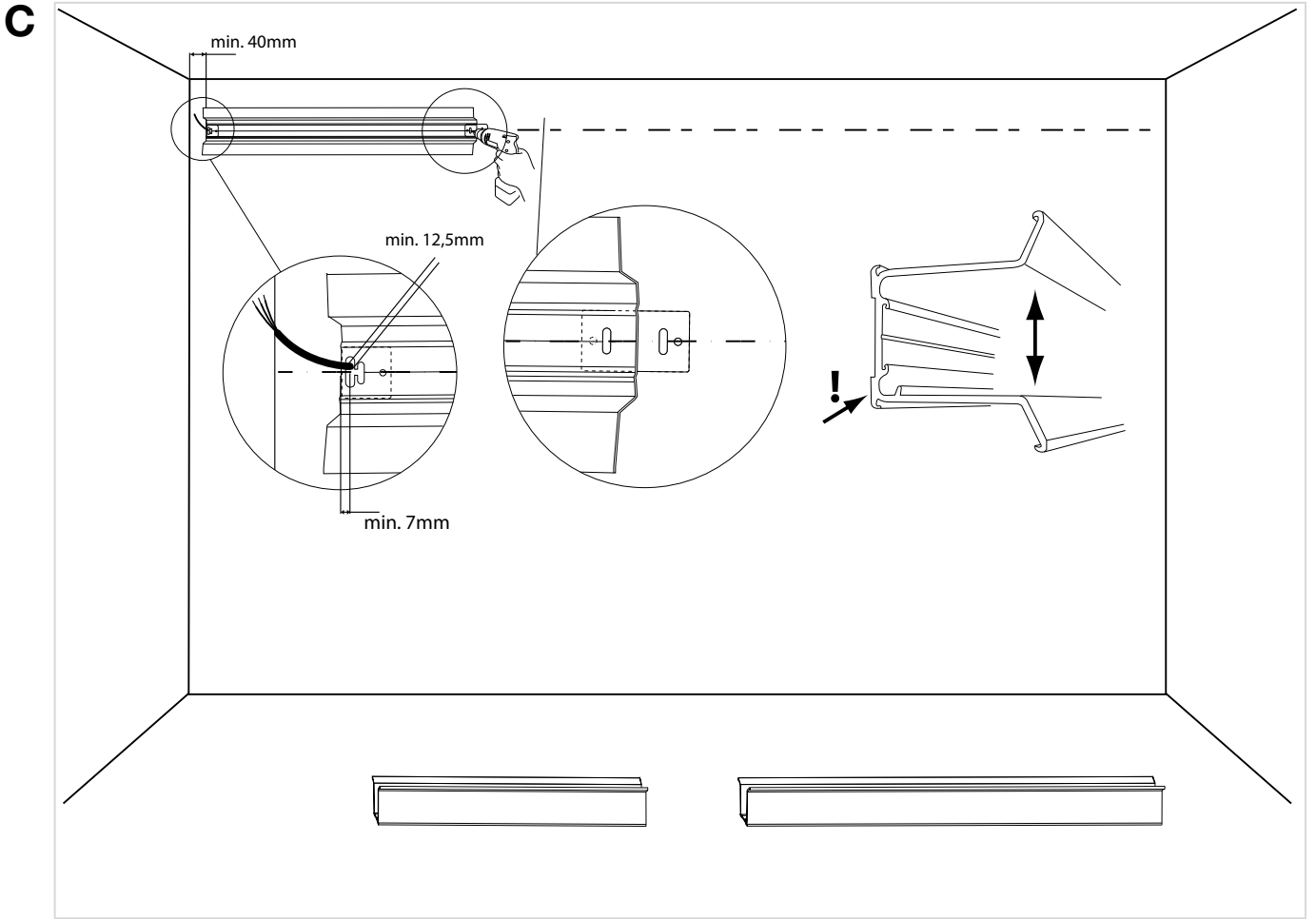
- La lampada non può essere utilizzata all'aperto (ICE 417)

- Classe di protezione I

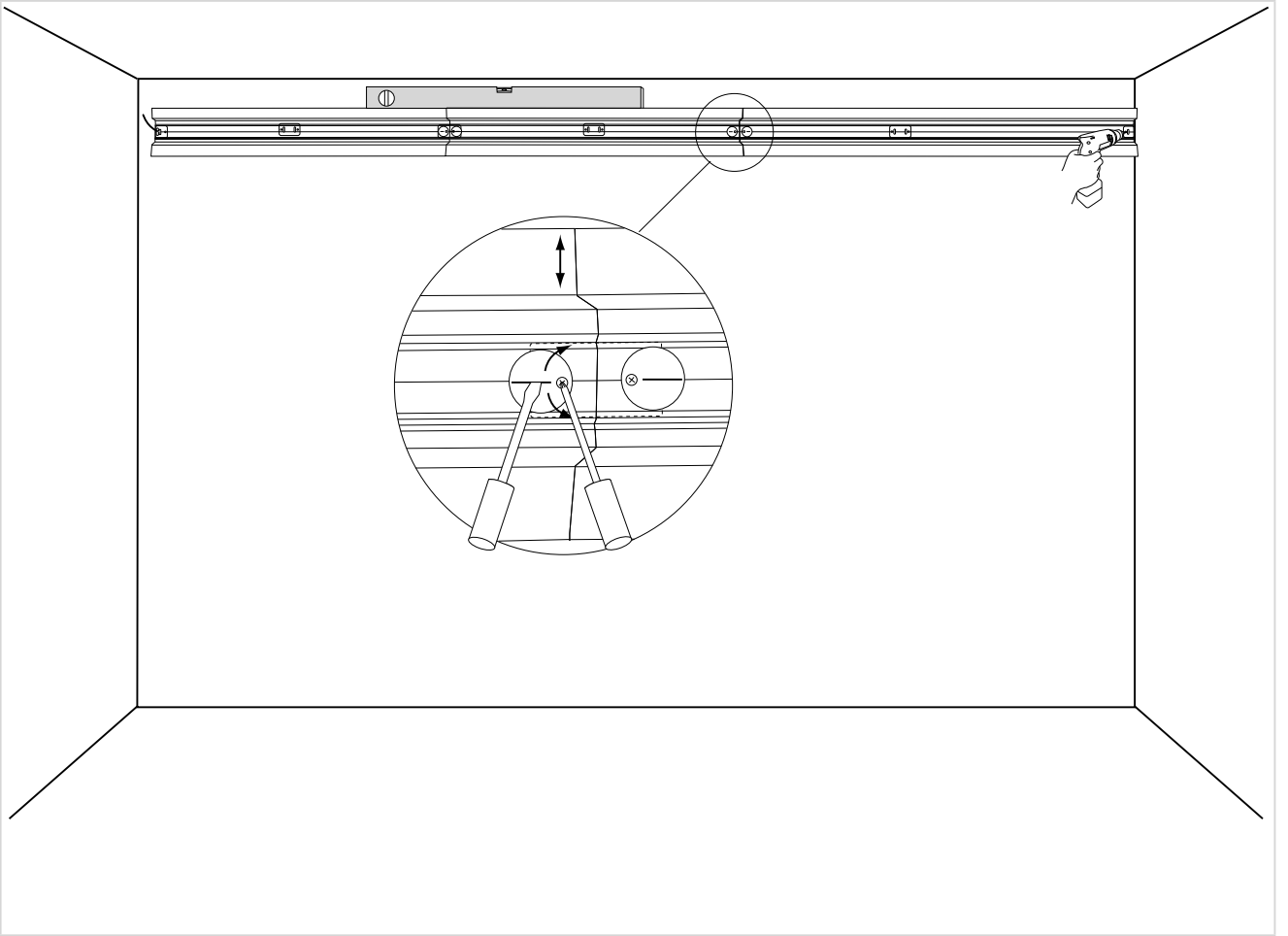
- Lampada **adatta** ad essere montata su superfici ad infiammabilità normale

- Conformità tecnica secondo le Direttive EN

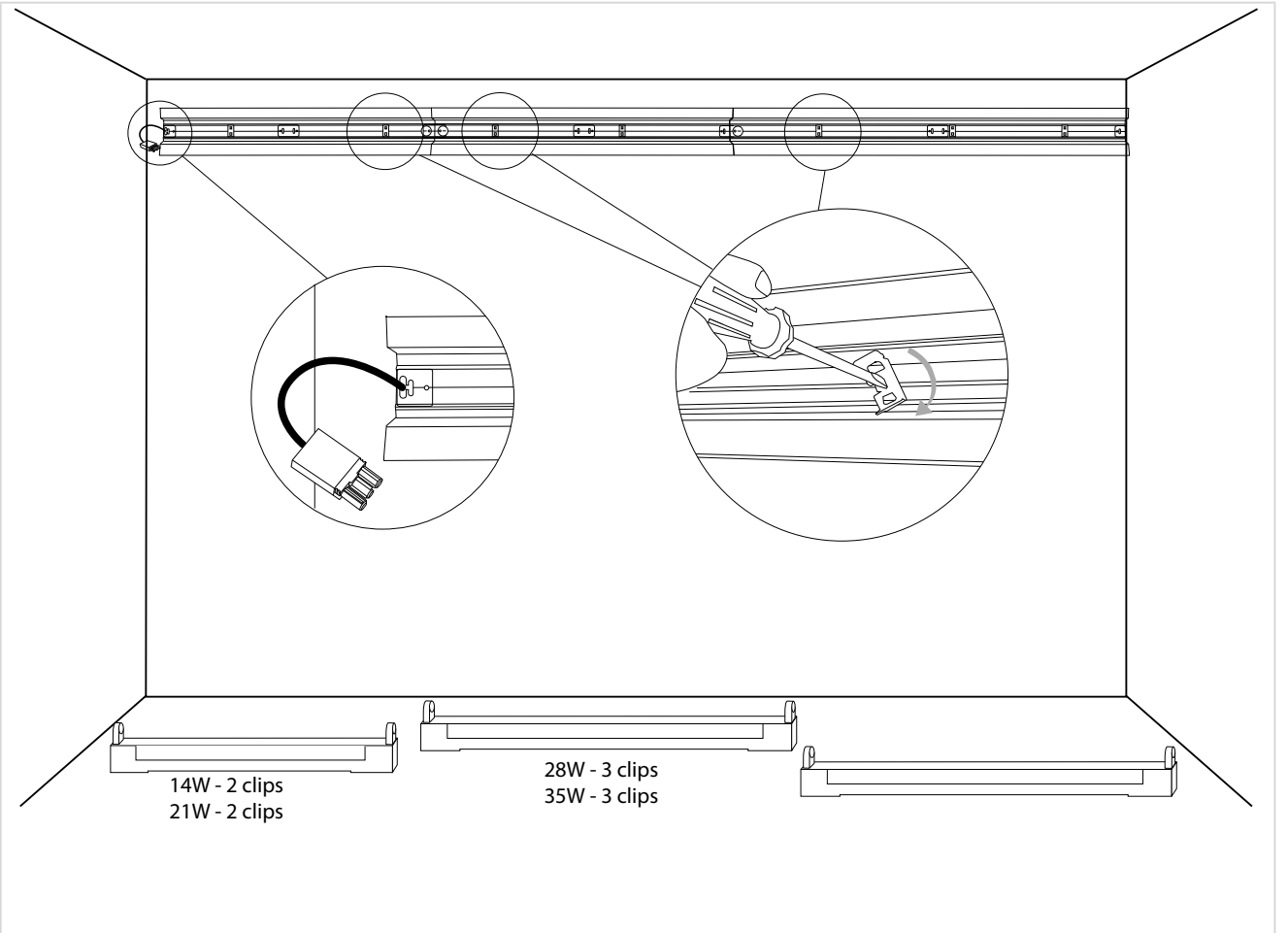


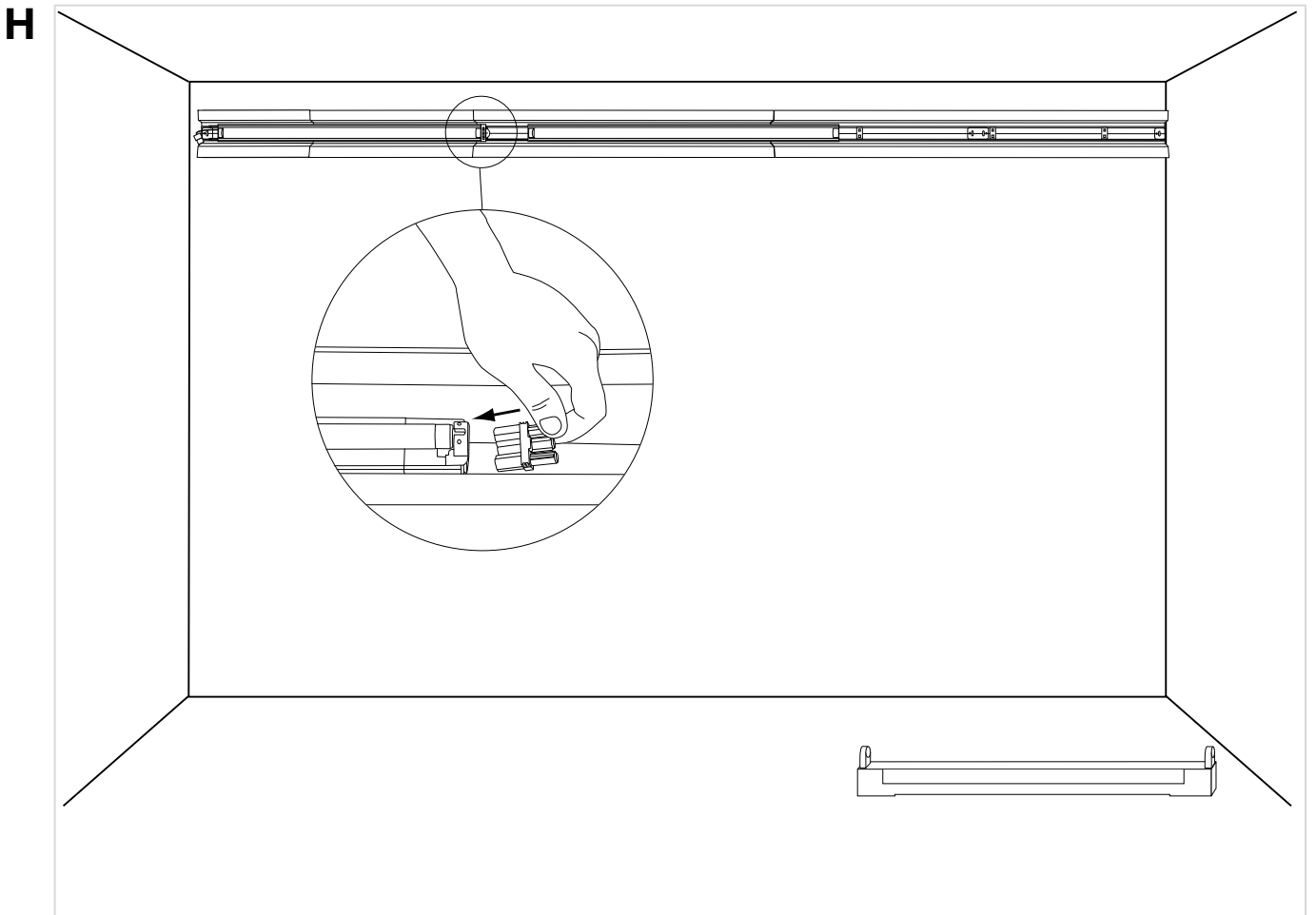
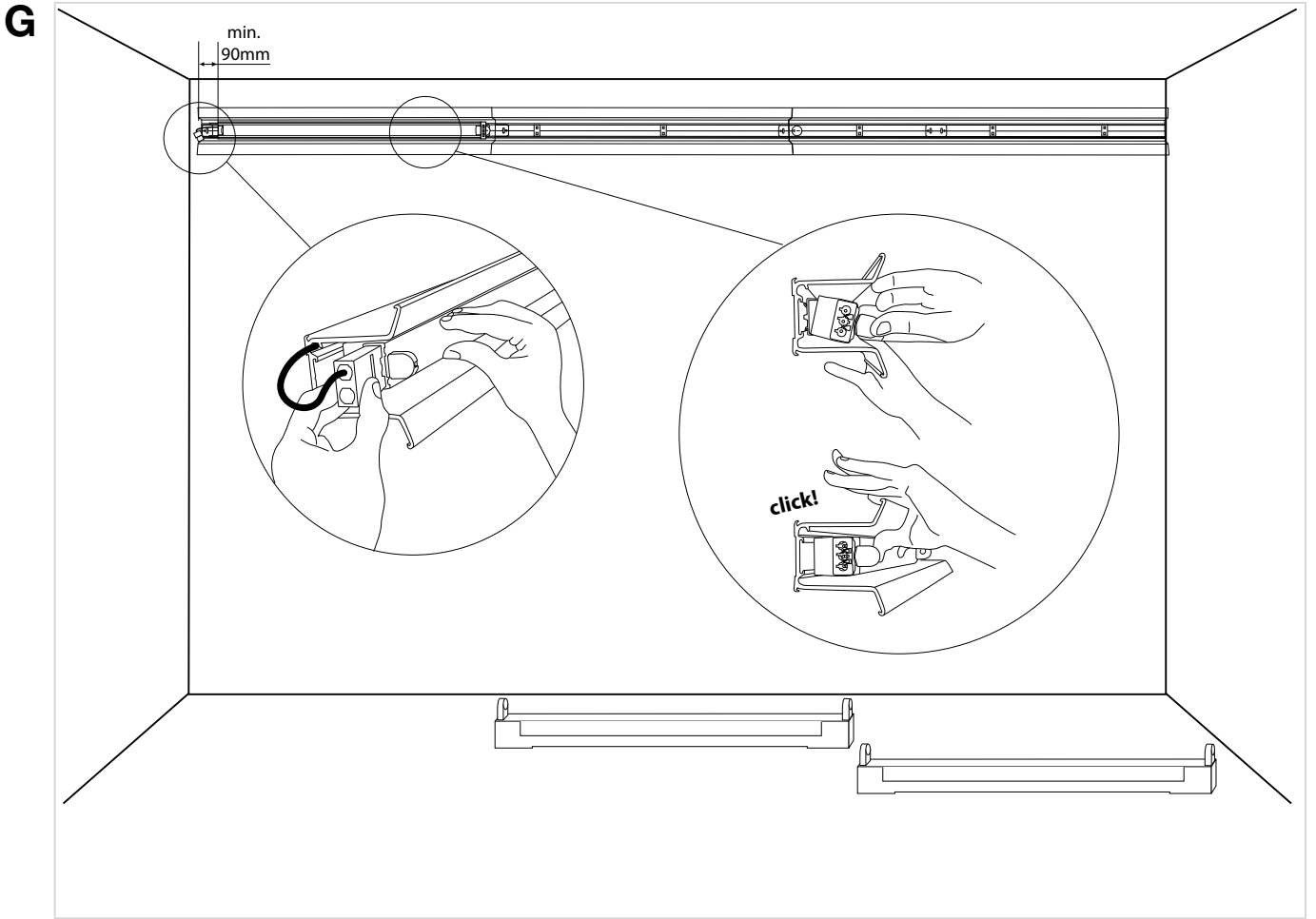


E

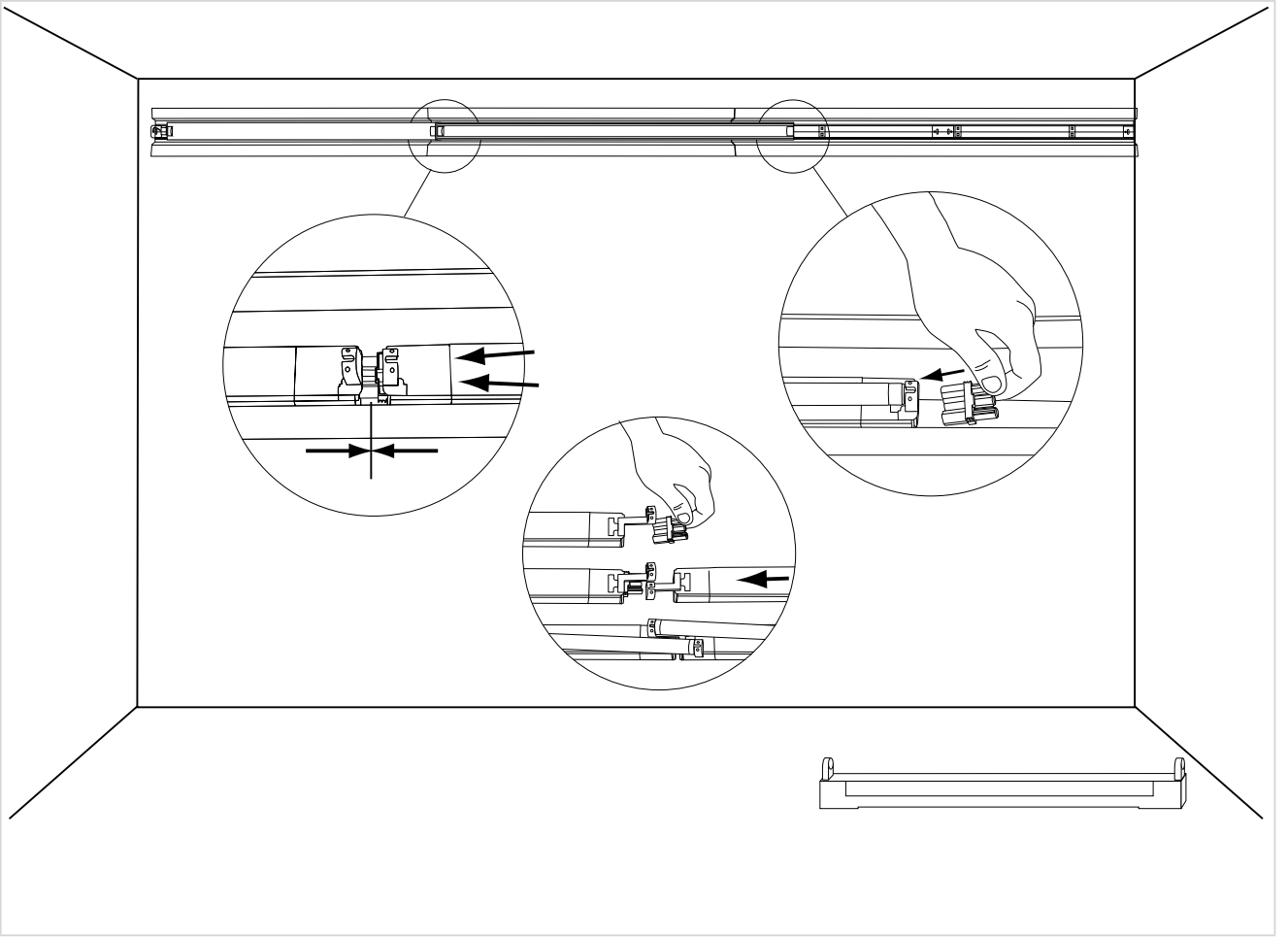


F

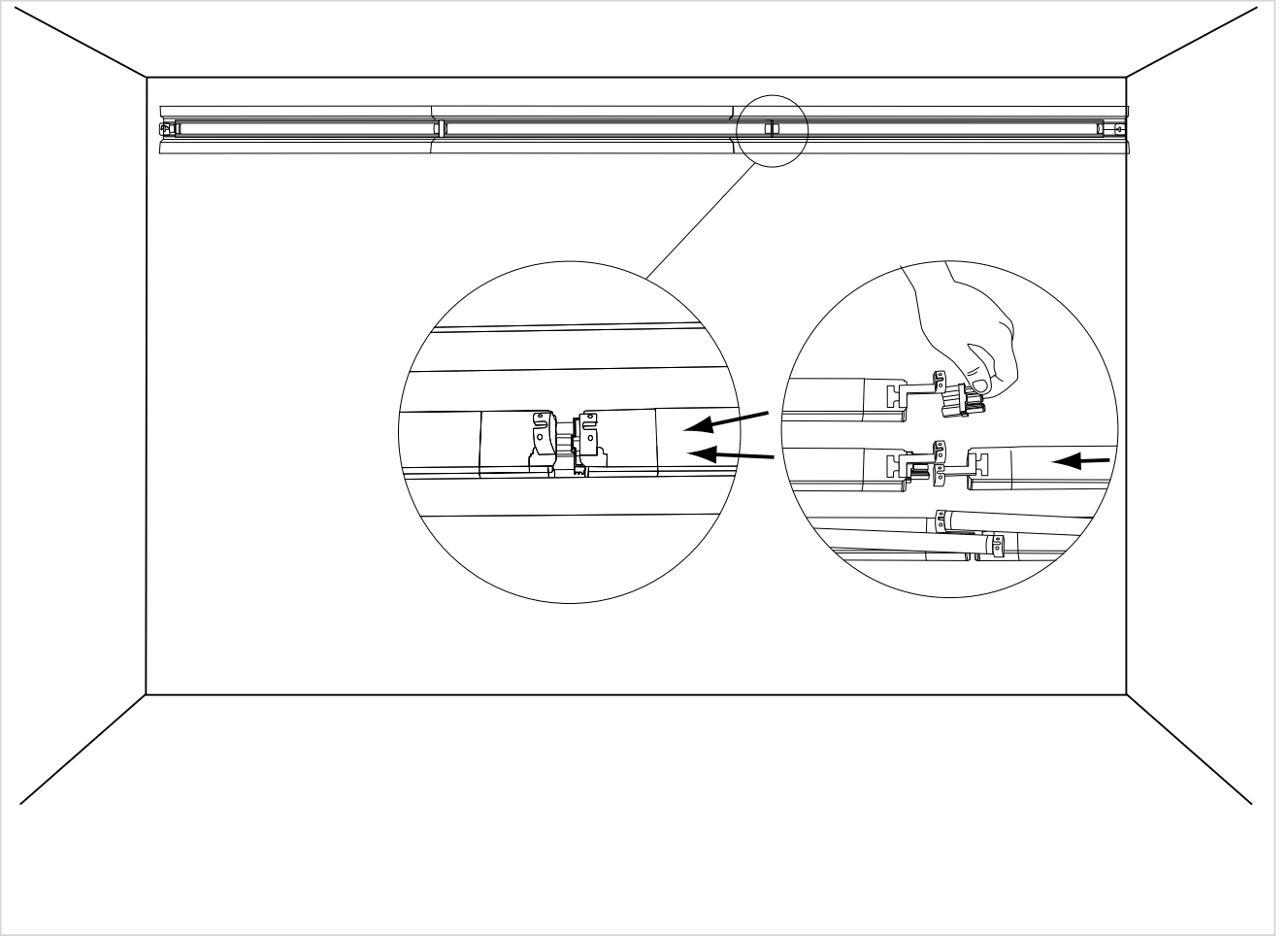




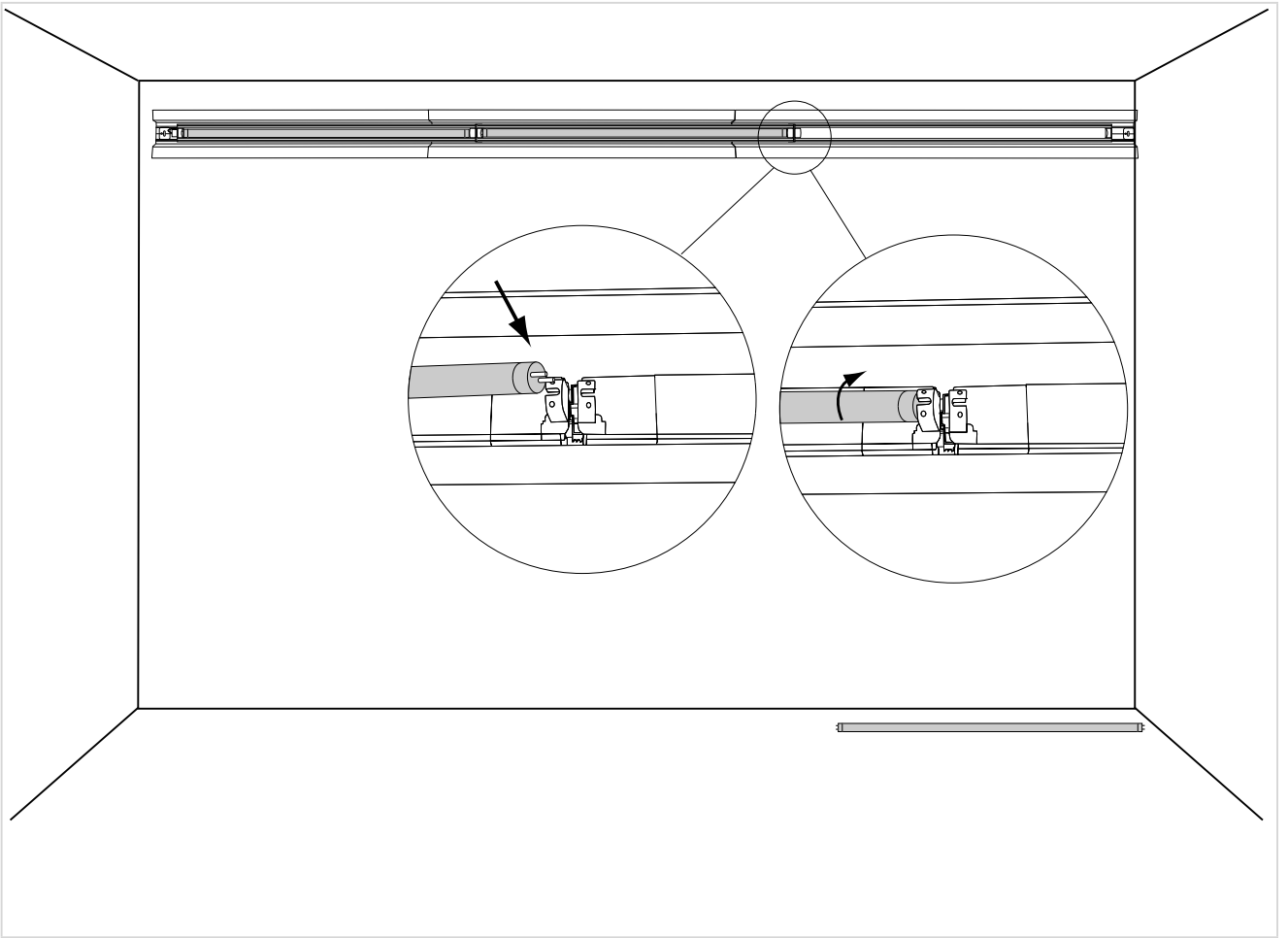
I



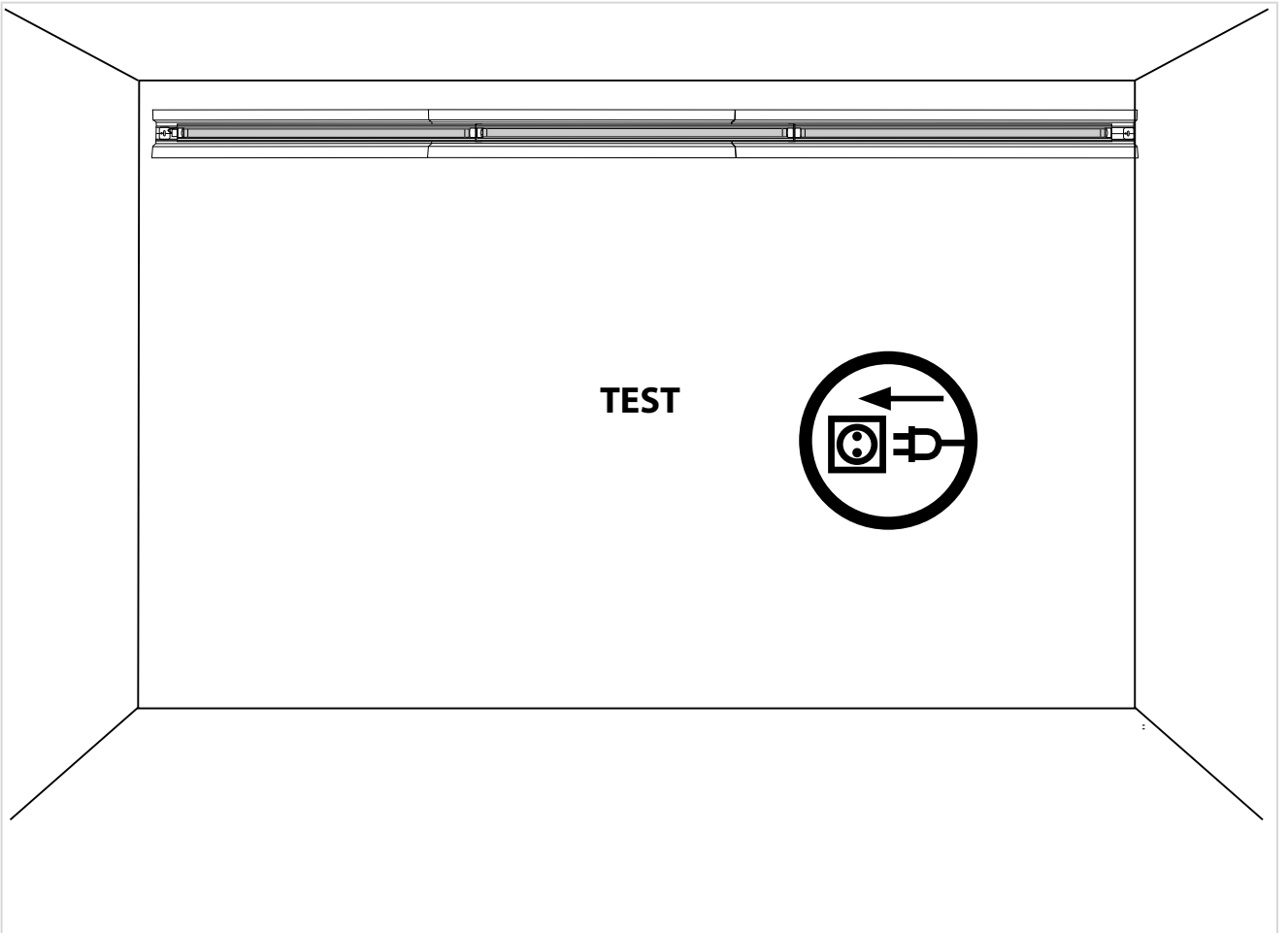
J



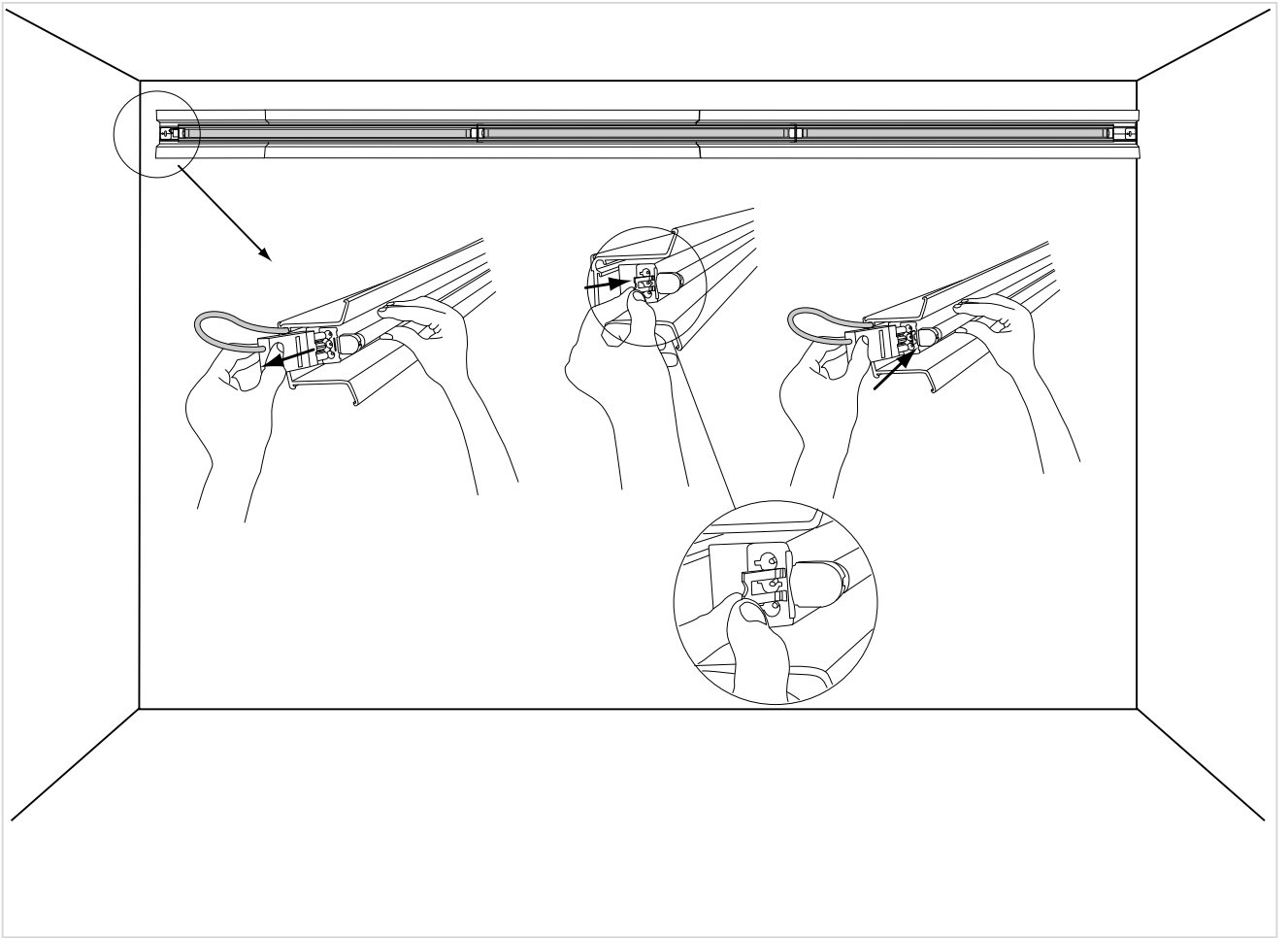
K



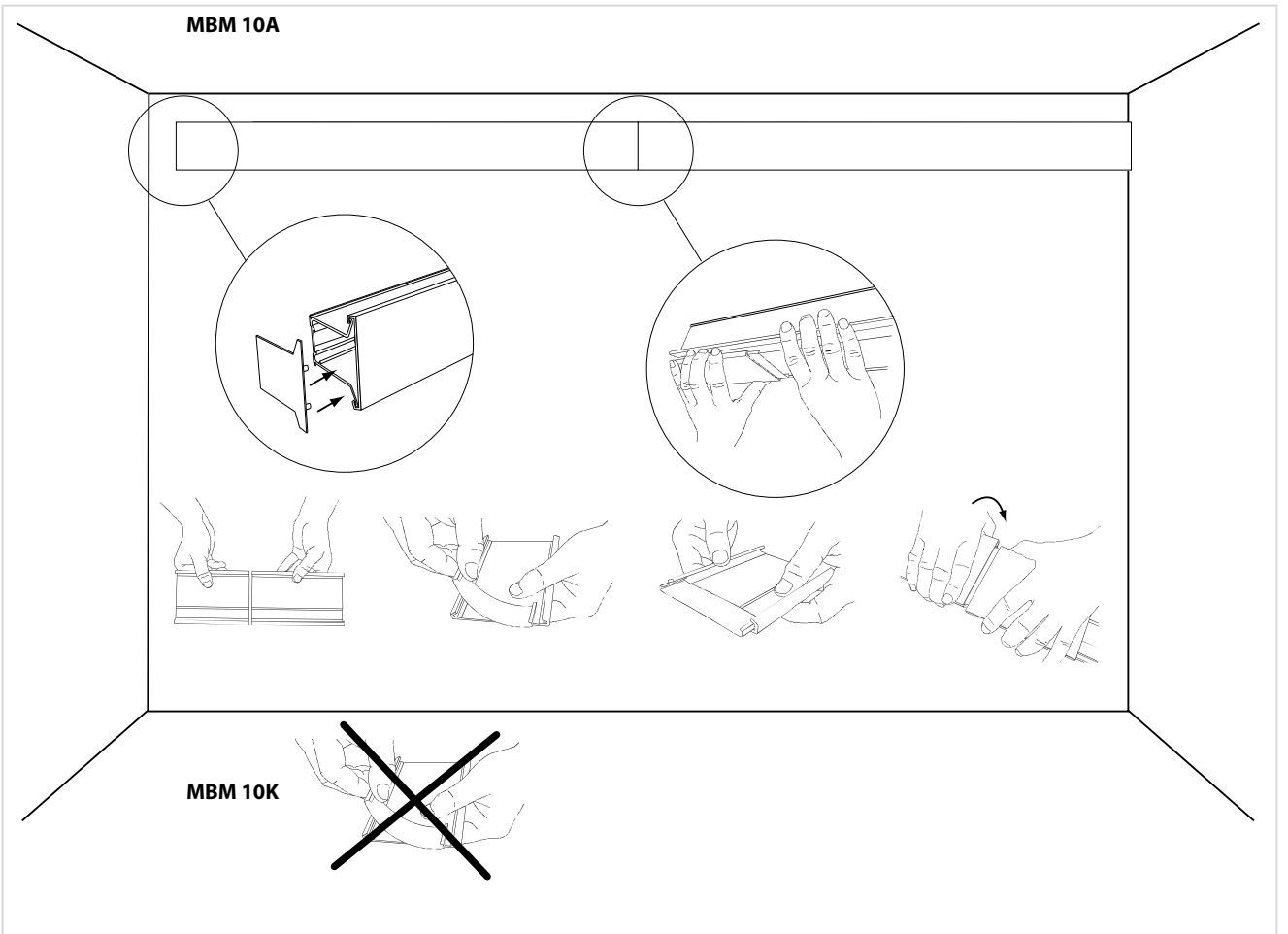
L



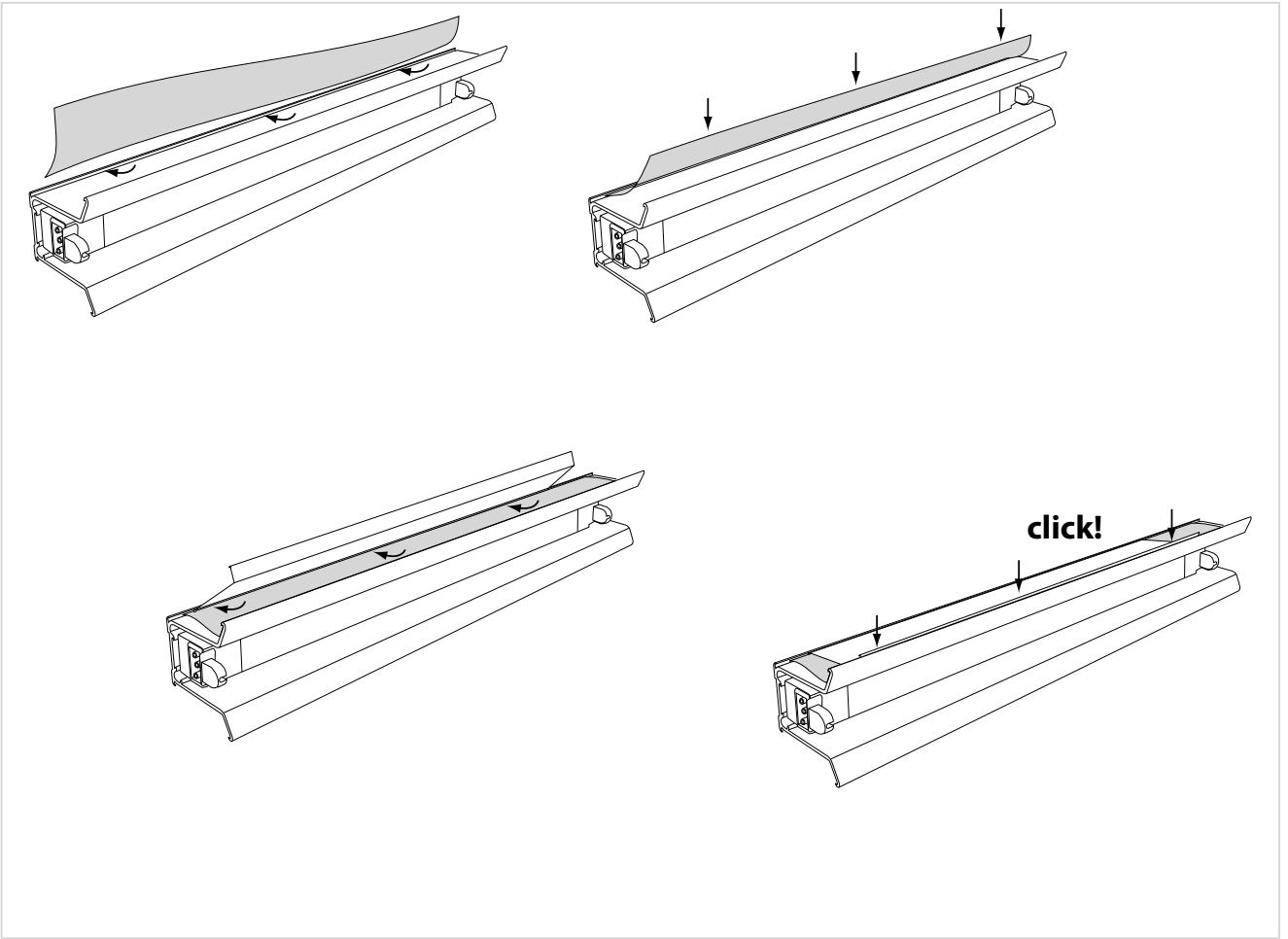
M



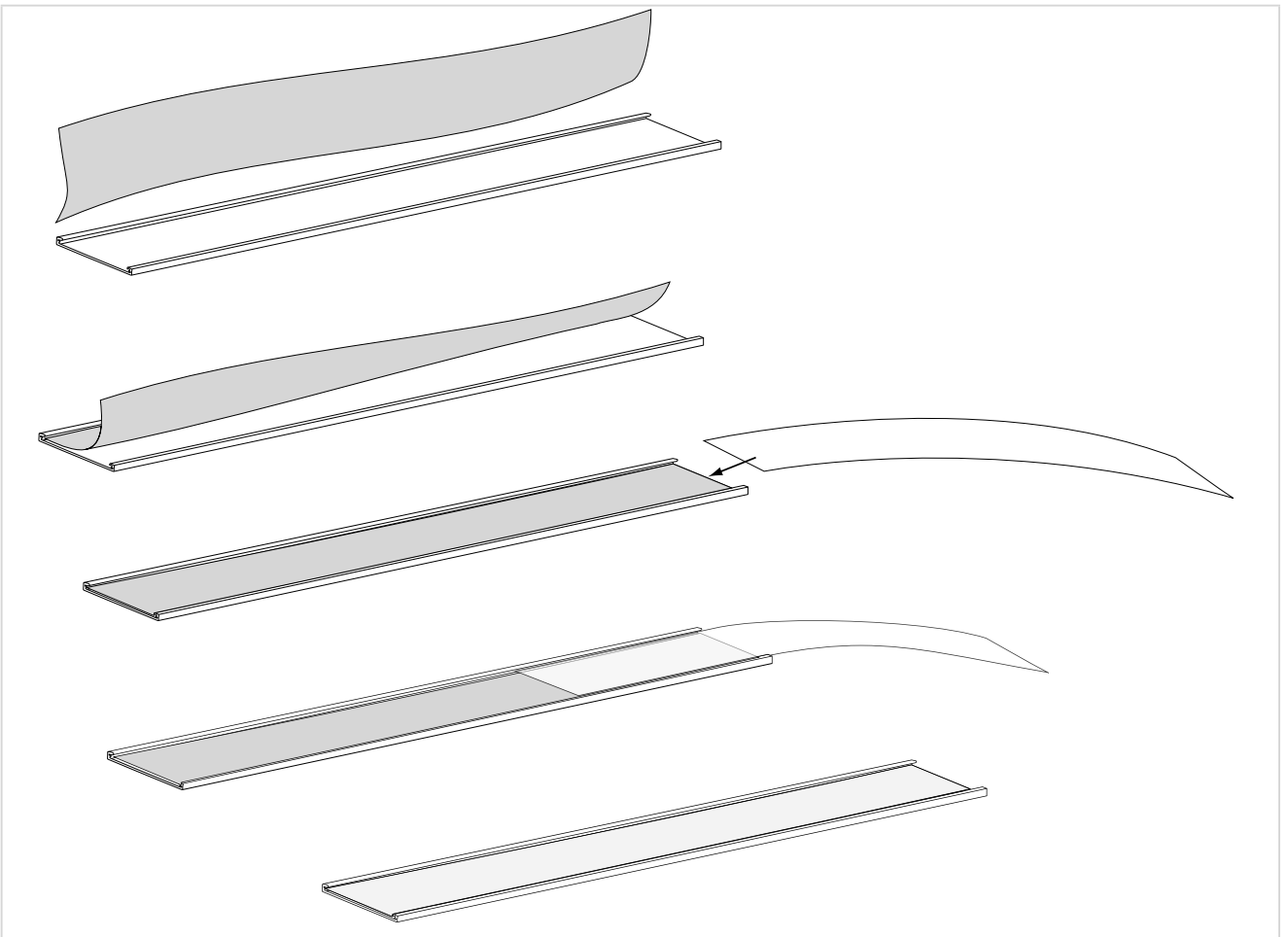
N



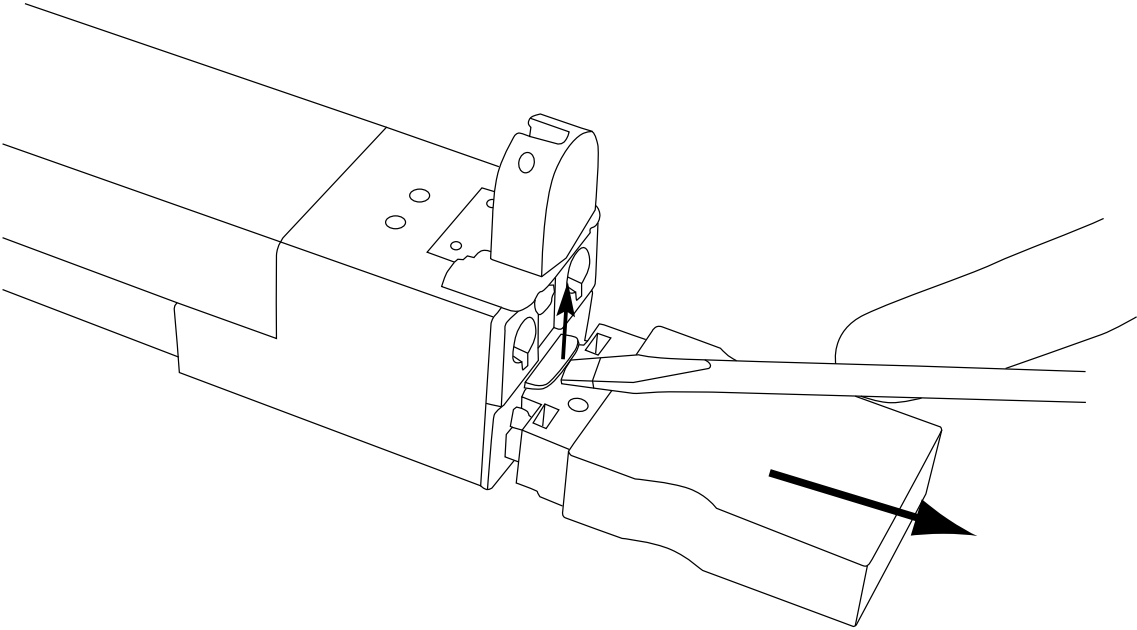
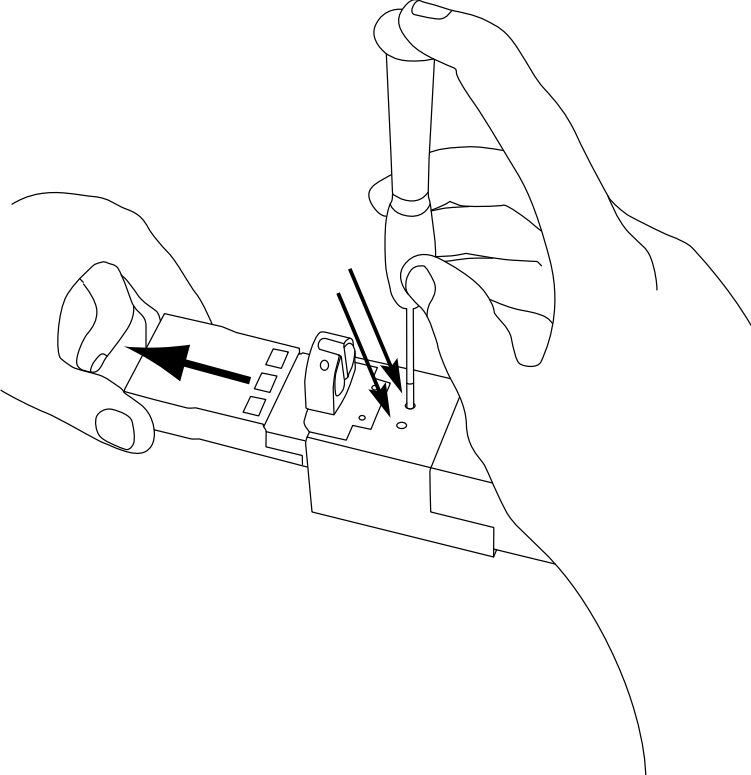
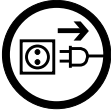
O

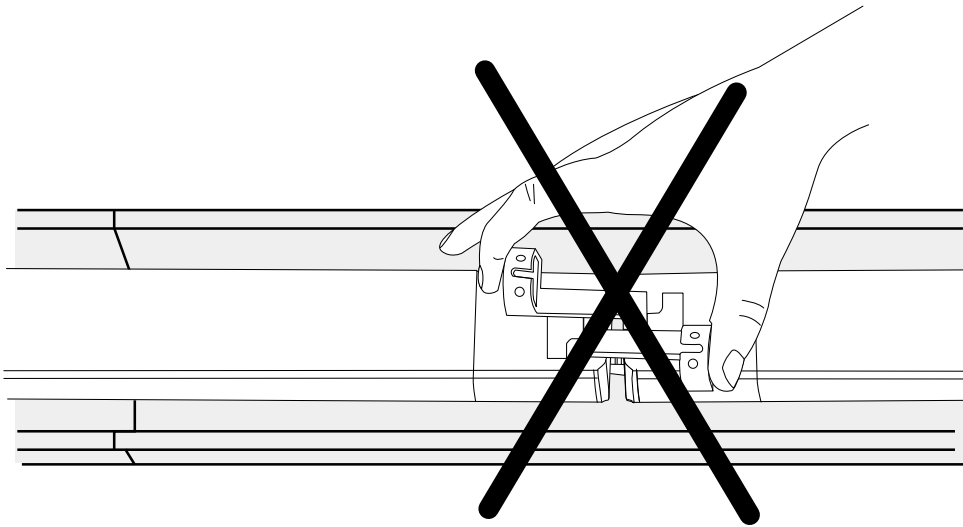
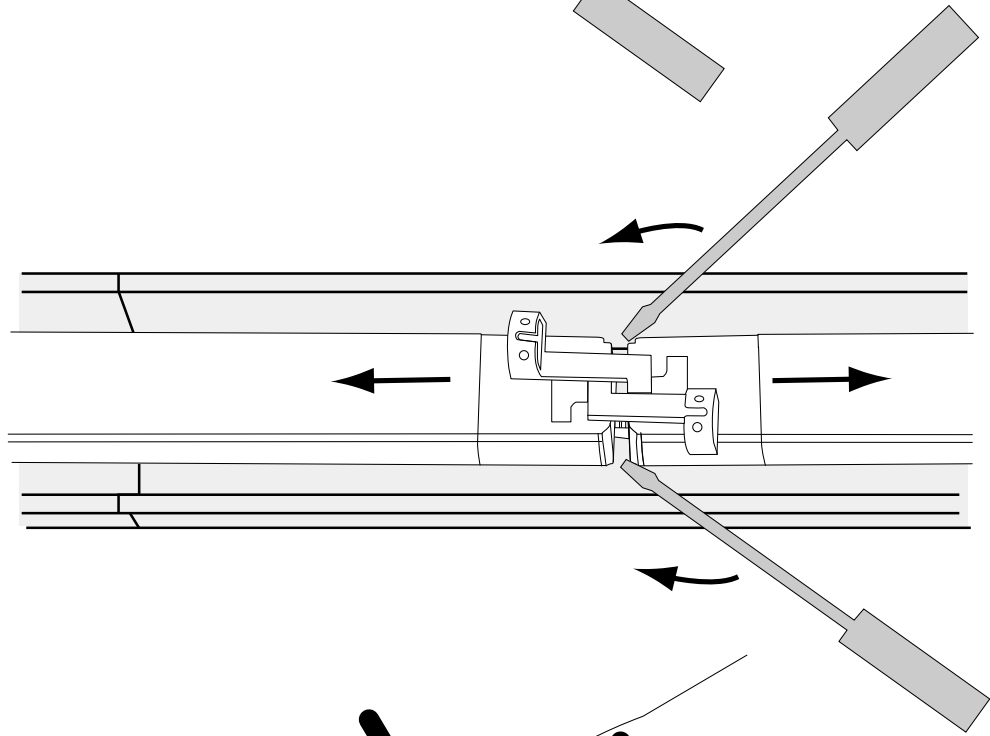
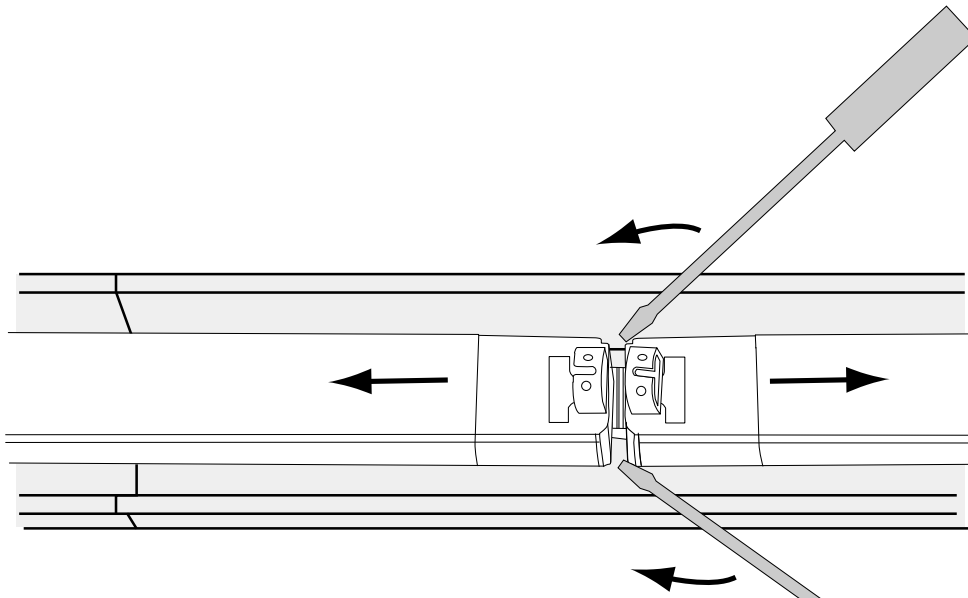


P



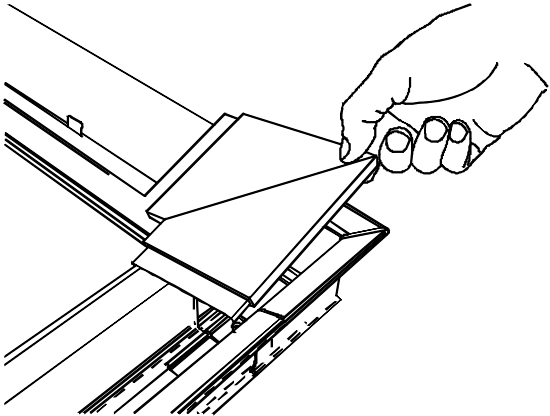
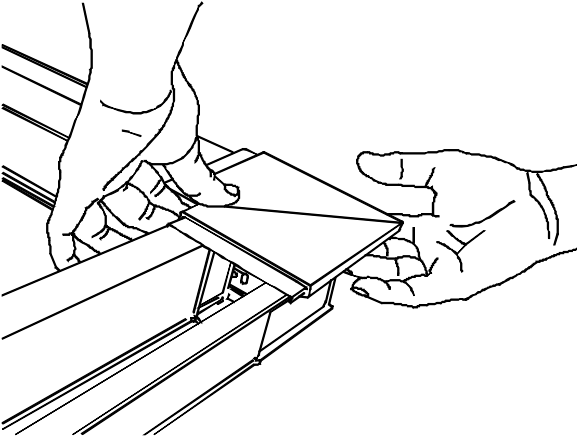
Demontage



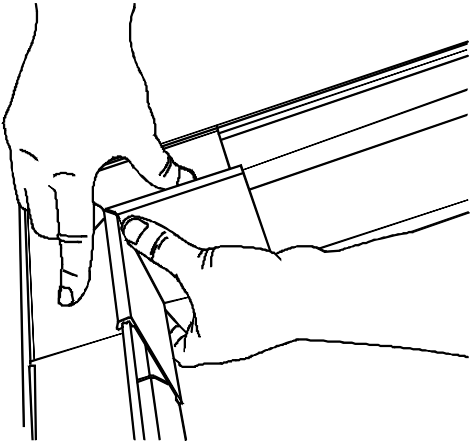
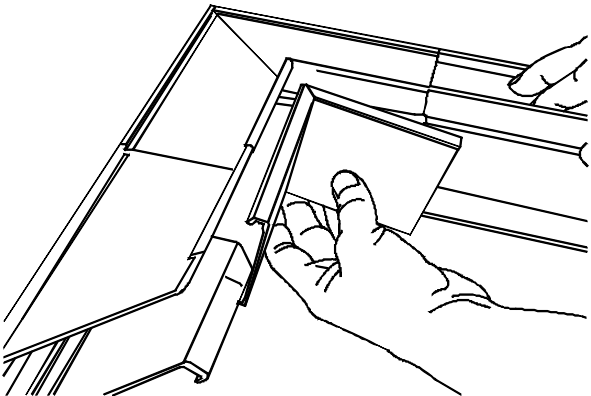


Eckenmontage

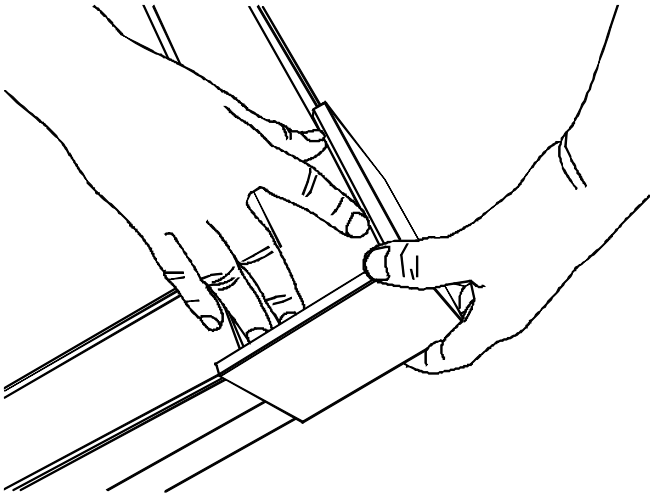
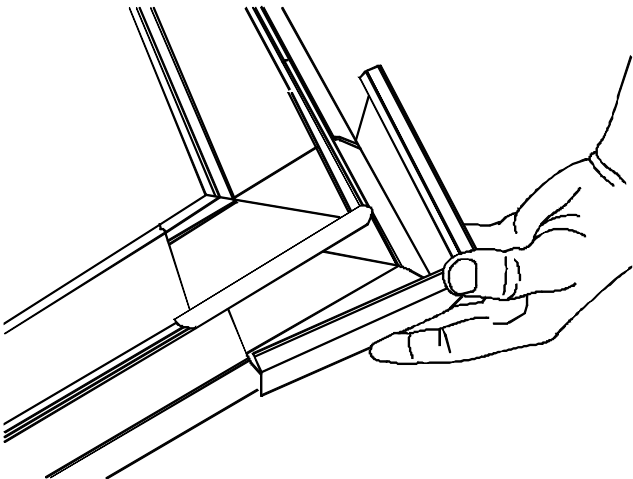
A

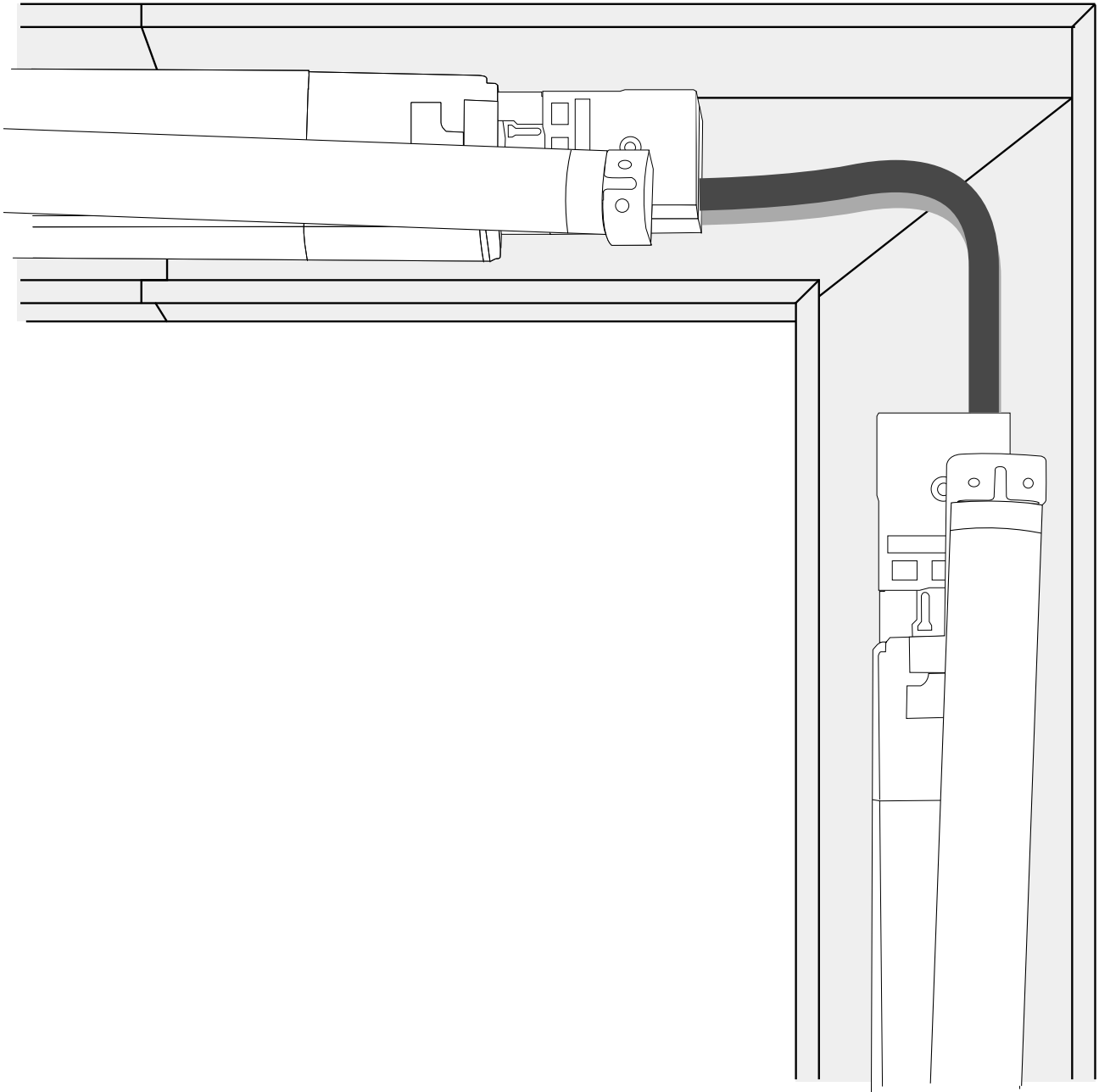


B

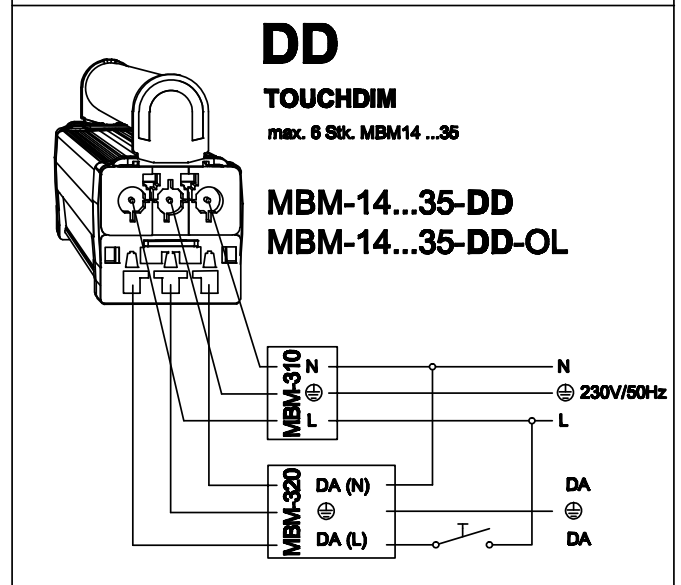
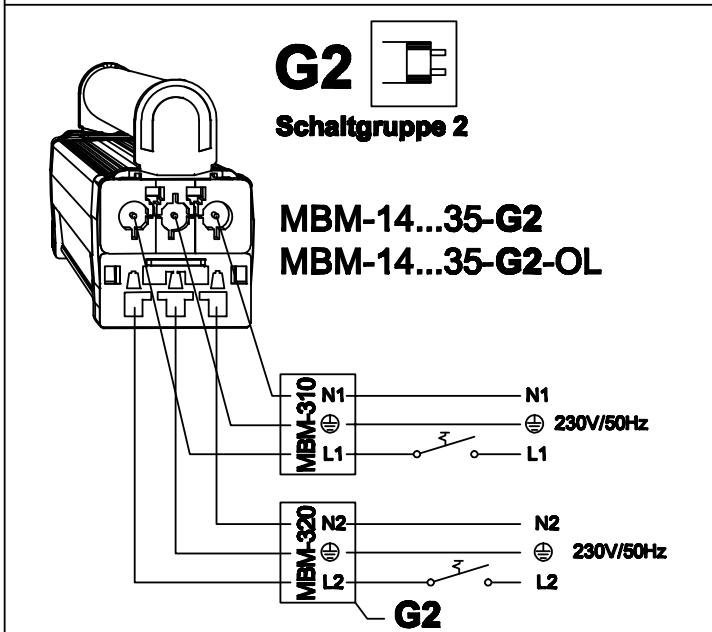
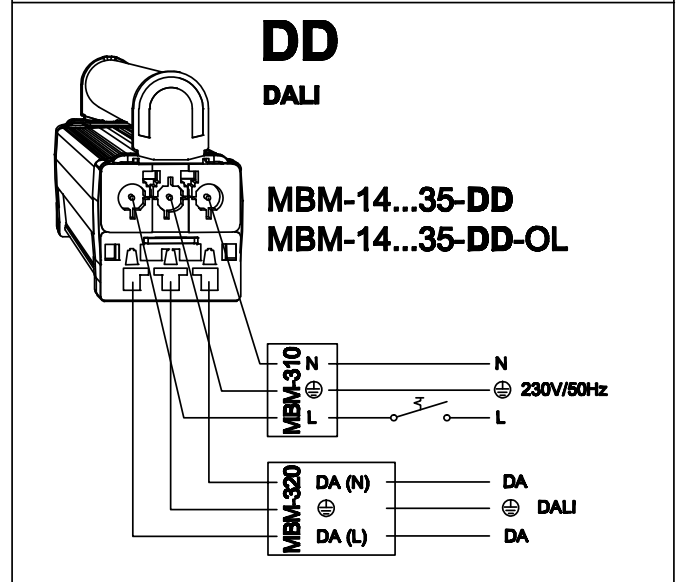
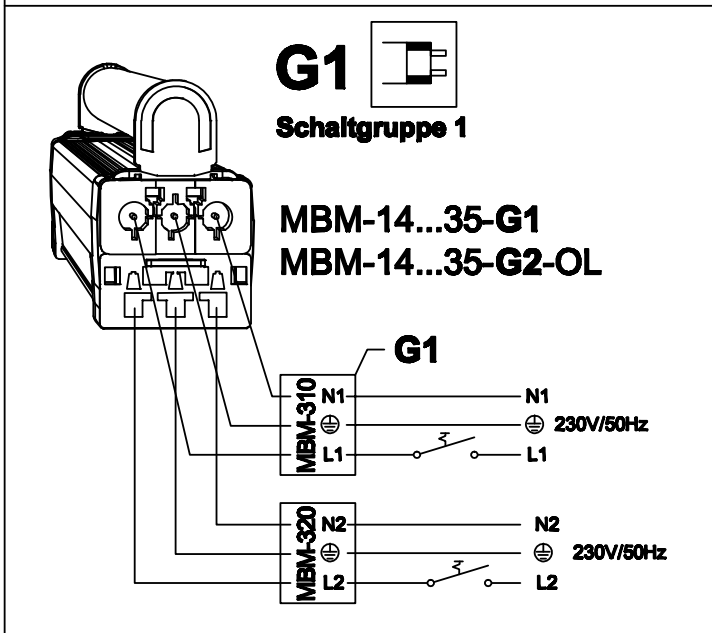
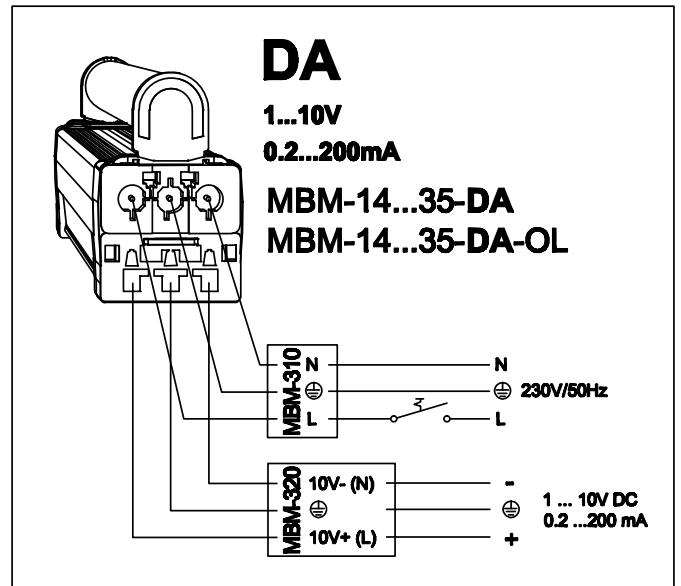
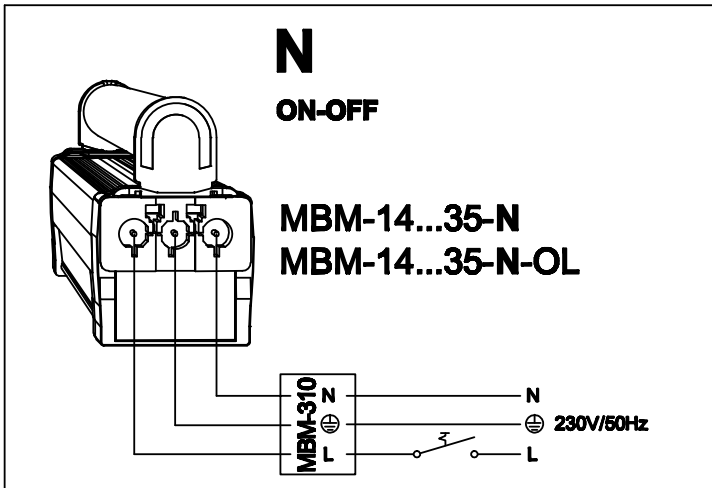


C





Netzanschluss





BELUX AG
www.belux.com